



Robison Engineering Company, Inc.
846 Victorian Avenue, Suite 20
Sparks, Nevada, 89431
775-852-2251 Office
775-852-9736 Fax
<https://www.robisoneng.com>

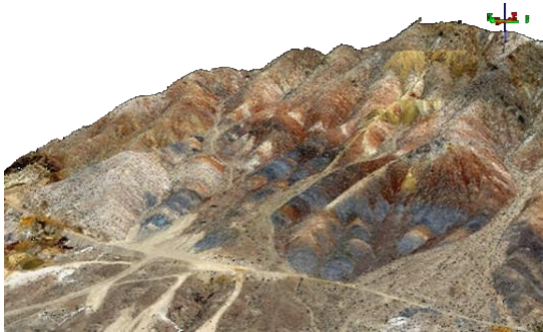


GENERAL STATEMENT OF QUALIFICATIONS

March, 2019

COMPANY PROFILE

[Robison Engineering Company Inc.](#) is an employee-owned, responsibility-driven, multidisciplinary and technologically savvy firm dedicated to directly and personally serving our clients. We are licensed in NV, CA, ID, UT, CO, WA, NM, HI, NJ, FL, TX, and Alberta, Canada. The diverse Robison Engineering team thrives on the steep, remote, difficult and lonely.



UAS DATA – SMITH VALLEY, NV

Civil and Structural Engineering

- Due diligence, scoping, water rights, land management and GIS
- Municipal site improvements, compliance, and renovation planning and permitting
- Complete site, grading and utility plans
- Hydrologic, hydraulic, and water system design
- [Construction](#) management, inspection, testing and permitting, as-built & contractor support
- [Structural](#) design including commercial, and industrial/mining buildings and foundation design
- Large scale steel structures
- Residential structural design
- Welding training, certification, and inspection

Environmental Consulting Services

- Phase I, II, & III [Environmental](#) ESA's
- NEPA, BLM, & USFS permitting
- Weed control and revegetation
- [Air Quality](#) Permitting and Evaluation
- Stormwater, SWPPP, QSP / QSD support
- Public Water System (PWS) Management



ENTERPRISE DR. PARKING LOT, UNR

Land Surveying, Photogrammetry & UAS

- Survey & GIS Coordination with environmental, planning and engineering.
- Topographic and ALTA/ACSM [Land Surveying](#)
- Construction layout staking & certification
- [Water Rights Surveying](#)
- Record of Survey, Parcel Maps & Legals
- FAA-licensed Commercial Drone Pilots
- [Unmanned Aerial Survey](#) (DBA Robison UAS) – Regional leader in Unmanned Aerial Surveying (UAS) with our Sensefly eBee fixed-wing and DJI quadcopter unmanned aerial vehicles, we provide precise 3d data, all in state plane coordinates accurately determined by a Land Surveyor, refinable to 0.1-foot resolution orthophotos and ½-foot contours depending on conditions

IT Support (DBA [Sierra Nevada Systems](#))

- Custom database programming & training
- GIS & supply chain integration
- Control Systems design & services
- Level 2/Level 3 network planning & support



Robison Engineering Company, Inc.
846 Victorian Avenue, Suite 20
Sparks, Nevada, 89431
775-852-2251 Office
775-852-9736 Fax
<https://www.robisoneng.com>



CONTACT US

Please visit our website to [meet our team](#). Everyone is key in one discipline or another. Check us out on [Angie's List](#) or [Google](#) – we invite your investigation and you can call any of us, any time 775-852-2251 – use extension “0” to ring the sparsely populated HQ, or to leave a message for all of us at once !

Aaron Hoberg Senior Professional aaron@robisoneng.com x 713	Alison Agneray Scientist alison@robisoneng.com x 0	Andrea Roegiers Staff Professional andrea@robisoneng.com x726	Cassidy Reese, EI Project Professional cassidy@robisoneng.com x 720
Chris Baxter Survey Crew Chief chris@robisoneng.com x 705	Christopher Ross, Ph.D. Senior Scientist cross@robisoneng.com x 707	Cody Ernst-Brock Scientist cody@robisoneng.com x 737	David Bakke Residential Designer david@robisoneng.com x 728
Dillon Clanton Crewman dillon@robisoneng.com x 732	Eric Joslin, EI Secretary, Senior Professional eric.joslin@robisoneng.com x 709	Eric Sage, PLS Senior Surveyor sage@robisoneng.com x 701	Giselle Ochoa Technician giselle@robisoneng.com x 733
Julianne Zotter, PE, CEM Treas., Sr. Enviro. Professional julianne@robisoneng.com x 710	Justin Haghighi IT Professional justin@robisoneng.com x 712	Kandylaria Havens PWS Operator Level II kandy@robisoneng.com x 734	Luke Doyle Staff Professional luke@robisoneng.com x 736
Makenzie Jones, EI Project Professional makenzie@robisoneng.com x722	Marcie Wood, CEM Sr. Enviro. Professional marcie@robisoneng.com x 724	Nathan Robison, PE, WRS President, Principal Engineer nathan@robisoneng.com x 700	Ralston Pedersen, EI Project Professional / Mining ralston@robisoneng.com x 717
Rebecca Bernier, PE Project Engineer rebecca@robisoneng.com x727	Richard Phelps, LSIT Survey Crew Chief rich@robisoneng.com x 719	Ryan Sigler UAS Professional ryan@robisoneng.com x 706	Ryan Switzer, PE Project Engineer rswitzer@robisoneng.com x 725
Steve Porter Systems Integrator steve@robisoneng.com x 718	Terry Munson Project Professional terry@robisoneng.com x 708	TJ Prendergast, PE VP, Senior Professional tj@robisoneng.com x 716	Tony Kelsoe Survey Crew Chief tony@robisoneng.com x 714
Victoria Jackson Staff Professional victoria@robisoneng.com x 723			

SELECTED CLIENT & PROJECT REFERENCES

University of Nevada, Reno – Reno, NV – Dean Hitchcock – (775) 682-7223 - dhitchcock@unr.edu

DF Altmann – Fernley & Sparks, NV – Trudi Linsey – (775) 852-7887 x 501 - trudi@dfaltmann.com

Coeur-Rochester, Inc. – Rochester Mine - Casey Kiel – (775) 273-7995 x 1823 - ckiel@coeur.com

Nevada Cement – Ben Bufmack – (775) 575-2281 - bbufmack@nevadacement.com

Tahoe Pyramid Bike Trail – Janet Phillips, PE – (775) 825-9868 - tahoepyramidbike@aol.com

Sky Tavern Ski Resort – Mt. Rose - Bill Henderson – (775) 323-5125 - bill.henderson@skytavern.com

Simerson Construction – Dru Simerson – (775) 883-3133 – dru@simersonusa.com