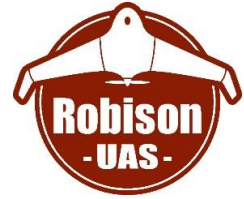




**Robison Engineering Company, Inc.**  
846 Victorian Avenue, Suite 20  
Sparks, Nevada, 89431  
775-852-2251 Office  
775-852-9736 Fax  
<https://www.robisoneng.com>



---

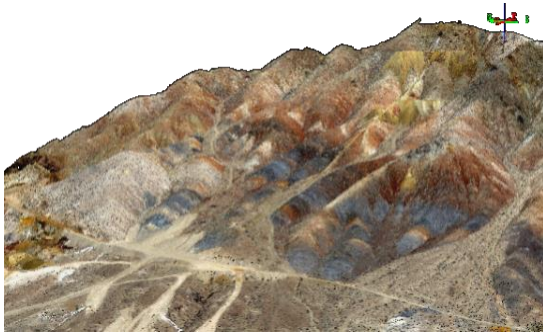
# GENERAL STATEMENT OF QUALIFICATIONS

---

August 2019

## COMPANY PROFILE

[Robison Engineering Company Inc.](#) is an employee-owned, responsibility-driven, multidisciplinary and technologically savvy firm dedicated to directly and personally serving our clients. We are licensed in NV, CA, ID, UT, CO, WA, NM, HI, NJ, FL, TX, and Alberta, Canada. The diverse Robison Engineering team thrives on the steep, remote, difficult and lonely.



**UAS DATA – SMITH VALLEY, NV**

### **Civil and Structural Engineering**

- Due diligence, scoping, water rights, land management and GIS
- Municipal site improvements, compliance, and renovation planning and permitting
- Complete site, grading and utility plans
- Hydrologic, hydraulic, and water system design
- [Construction](#) management, inspection, testing and permitting, as-built & contractor support
- [Structural](#) design including commercial, and industrial/mining buildings and foundation design
- Large scale steel structures
- Residential structural design
- Welding training, certification, and inspection

### **Environmental Consulting Services**

- Phase I, II, & III [Environmental](#) ESA's
- NEPA, BLM, & USFS permitting
- Weed control and revegetation
- [Air Quality](#) Permitting and Evaluation
- Stormwater, SWPPP, QSP / QSD support
- Public Water System (PWS) Management



**ENTERPRISE DR. PARKING LOT, UNR**

### **Land Surveying, Photogrammetry & UAS**

- Survey & GIS Coordination with environmental, planning and engineering.
- Topographic and ALTA/ACSM [Land Surveying](#)
- Construction layout staking & certification
- [Water Rights Surveying](#)
- Record of Survey, Parcel Maps & Legals
- FAA-licensed Commercial Drone Pilots
- [Unmanned Aerial Survey](#) (DBA Robison UAS) – Regional leader in Unmanned Aerial Surveying (UAS) with our Sensefly eBee fixed-wing and DJI quadcopter unmanned aerial vehicles, we provide precise 3d data, all in state plane coordinates accurately determined by a Land Surveyor, refinable to 0.1-foot resolution orthophotos and ½-foot contours depending on conditions

### **IT Support (DBA [Sierra Nevada Systems](#))**

- Custom database programming & training
- GIS & supply chain integration
- Control Systems design & services
- Level 2/Level 3 network planning & support



**Robison Engineering Company, Inc.**  
846 Victorian Avenue, Suite 20  
Sparks, Nevada, 89431  
775-852-2251 Office  
775-852-9736 Fax  
<https://www.robisoneng.com>



## CONTACT US

Please visit our website to [meet our team](#). Everyone is key in one discipline or another. Check us out on [Angie's List](#) or [Google](#) – we invite your investigation and you can call any of us, any time 775-852-2251 – use extension “0” to ring the sparsely populated HQ, or to leave a message for all of us at once.

|   |  |   |  |
|---|--|---|--|
| Aaron Hoberg<br>Senior Professional<br><a href="mailto:aaron@robisoneng.com">aaron@robisoneng.com</a> x 713                           | Alison Agneray<br>Scientist<br><a href="mailto:alison@robisoneng.com">alison@robisoneng.com</a> x 0                                | Andrea Roegiers<br>Staff Professional<br><a href="mailto:andrea@robisoneng.com">andrea@robisoneng.com</a> x726                    | Cassidy Reese, EI<br>Project Professional<br><a href="mailto:cassidy@robisoneng.com">cassidy@robisoneng.com</a> x 720                      |
| Chris Baxter<br>Survey Crew Chief<br><a href="mailto:chris@robisoneng.com">chris@robisoneng.com</a> x 705                             | Christopher Ross, Ph.D.<br>Senior Scientist<br><a href="mailto:cross@robisoneng.com">cross@robisoneng.com</a> x 707                | Cody Ernst-Brock<br>Scientist<br><a href="mailto:cody@robisoneng.com">cody@robisoneng.com</a> x 737                               | David Bakke<br>Residential Designer<br><a href="mailto:david@robisoneng.com">david@robisoneng.com</a> x 728                                |
| Eric Joslin, EI<br>Secretary, Senior Professional<br><a href="mailto:eric.joslin@robisoneng.com">eric.joslin@robisoneng.com</a> x 709 | Eric Sage, PLS<br>Senior Surveyor<br><a href="mailto:sage@robisoneng.com">sage@robisoneng.com</a> x 701                            | Giselle Ochoa<br>Technician<br><a href="mailto:giselle@robisoneng.com">giselle@robisoneng.com</a> x 733                           | Julianne Zotter, PE, CEM<br>Treas., Sr. Enviro. Professional<br><a href="mailto:julianne@robisoneng.com">julianne@robisoneng.com</a> x 710 |
| Justin Haghighi<br>IT Professional<br><a href="mailto:justin@robisoneng.com">justin@robisoneng.com</a> x 712                          | Kandylaria Havens<br>PWS Operator Level II<br><a href="mailto:kandy@robisoneng.com">kandy@robisoneng.com</a> x 734                 | Luke Doyle<br>Staff Professional<br><a href="mailto:luke@robisoneng.com">luke@robisoneng.com</a> x 736                            | Makenzie Jones, EI<br>Project Professional<br><a href="mailto:makenzie@robisoneng.com">makenzie@robisoneng.com</a> x722                    |
| Marcie Wood, CEM<br>Sr. Enviro. Professional<br><a href="mailto:marcie@robisoneng.com">marcie@robisoneng.com</a> x 724                | Nathan Robison, PE, WRS<br>President, Principal Engineer<br><a href="mailto:nathan@robisoneng.com">nathan@robisoneng.com</a> x 700 | Ralston Pedersen, EI<br>Project Professional / Mining<br><a href="mailto:ralston@robisoneng.com">ralston@robisoneng.com</a> x 717 | Rebecca Bernier, PE<br>Project Engineer<br><a href="mailto:rebecca@robisoneng.com">rebecca@robisoneng.com</a> x727                         |
| Richard Phelps, LSIT<br>Survey Crew Chief<br><a href="mailto:rich@robisoneng.com">rich@robisoneng.com</a> x 719                       | Ryan Sigler<br>UAS Professional<br><a href="mailto:ryan@robisoneng.com">ryan@robisoneng.com</a> x 706                              | Ryan Switzer, PE<br>Project Engineer<br><a href="mailto:rswitzer@robisoneng.com">rswitzer@robisoneng.com</a> x 725                | Steve Porter<br>Systems Integrator<br><a href="mailto:steve@robisoneng.com">steve@robisoneng.com</a> x 718                                 |
| Terry Munson<br>Project Professional<br><a href="mailto:terry@robisoneng.com">terry@robisoneng.com</a> x 708                          | TJ Prendergast, PE<br>VP, Senior Professional<br><a href="mailto:tj@robisoneng.com">tj@robisoneng.com</a> x 716                    | Tony Kelsoe<br>Survey Crew Chief<br><a href="mailto:tony@robisoneng.com">tony@robisoneng.com</a> x 714                            | Victoria Jackson<br>Staff Professional<br><a href="mailto:victoria@robisoneng.com">victoria@robisoneng.com</a> x 723                       |

## SELECTED CLIENT & PROJECT REFERENCES

**University of Nevada, Reno** – Reno, NV – Dean Hitchcock – (775) 682-7223 - [dhitchcock@unr.edu](mailto:dhitchcock@unr.edu)

**DF Altmann** – Fernley & Sparks, NV – Trudi Linsey – (775) 852-7887 x 501 - [trudi@dfaltmann.com](mailto:trudi@dfaltmann.com)

**Coeur-Rochester, Inc.** – Rochester Mine - Casey Kiel – (775) 273-7995 x 1823 - [ckiel@coeur.com](mailto:ckiel@coeur.com)

**Nevada Cement** – Ben Bufmack – (775) 575-2281 - [bbufmack@nevadacement.com](mailto:bbufmack@nevadacement.com)

**Tahoe Pyramid Bike Trail** – Janet Phillips, PE – (775) 825-9868 - [tahoepyramidbike@aol.com](mailto:tahoepyramidbike@aol.com)

**Sky Tavern Ski Resort – Tonopah Historic Mining Park** – Ann Carpenter – (775) 240-2477 - [ann.carpenter57@gmail.com](mailto:ann.carpenter57@gmail.com)

**Simerson Construction** – Dru Simerson – (775) 883-3133 – [dru@simersonusa.com](mailto:dru@simersonusa.com)