



Robison Engineering Company, Inc.
846 Victorian Avenue, Suite 20
Sparks, Nevada, 89431
775-852-2251 Office
775-852-9736 Fax
<https://www.robisoneng.com>

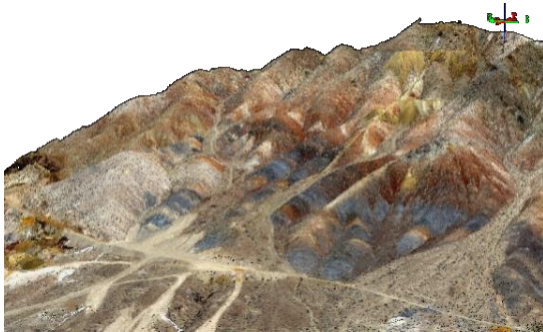


GENERAL STATEMENT OF QUALIFICATIONS

October 2019

COMPANY PROFILE

[Robison Engineering Company Inc.](#) is an 100% employee-owned, responsibility-driven, multidisciplinary and technologically savvy firm dedicated to directly and personally serving our clients. We are licensed in NV, CA, ID, UT, CO, WA, NM, HI, NJ, FL, SD, TX, SC and Alberta, Canada. The diverse Robison Engineering team thrives on the steep, remote, difficult and lonely.



UAS DATA – SMITH VALLEY, NV

Civil and Structural Engineering

- Due diligence, scoping, water rights, land management and GIS
- Municipal site improvements, compliance, and renovation planning and permitting
- Complete site, grading and utility plans
- Hydrologic, hydraulic, and water system design
- [Construction](#) management, inspection, testing and permitting, as-built & contractor support
- [Structural](#) design including commercial, and industrial/mining buildings and foundation design
- Large scale steel structures
- Residential structural design
- Welding training, certification, and inspection

Environmental Consulting Services

- Phase I, II, & III [Environmental](#) ESA's
- NEPA, BLM, & USFS permitting
- Weed control and revegetation
- [Air Quality](#) Permitting and Evaluation
- Stormwater, SWPPP, QSP / QSD support
- Public Water System (PWS) Management



ENTERPRISE DR. PARKING LOT, UNR

Land Surveying, Photogrammetry & UAS

- Survey & GIS Coordination with environmental, planning and engineering.
- Topographic and ALTA/ACSM [Land Surveying](#)
- Construction layout staking & certification
- [Water Rights Surveying](#)
- Record of Survey, Parcel Maps & Legals
- FAA-licensed Commercial Drone Pilots
- [Unmanned Aerial Survey](#) (DBA Robison UAS) – Regional leader in Unmanned Aerial Surveying (UAS) with our Sensefly eBee fixed-wing and DJI quadcopter unmanned aerial vehicles, we provide precise 3d data, all in state plane coordinates accurately determined by a Land Surveyor, refinable to 0.1-foot resolution orthophotos and ½-foot contours depending on conditions

IT Support (DBA [Sierra Nevada Systems](#))

- Custom database programming & training
- GIS & supply chain integration
- Control Systems design & services
- Level 2/Level 3 network planning & support



Robison Engineering Company, Inc.
846 Victorian Avenue, Suite 20
Sparks, Nevada, 89431
775-852-2251 Office
775-852-9736 Fax
<https://www.robisoneng.com>



CONTACT US

Please visit our website to [meet our team](#). Everyone is key in one discipline or another. Check us out on [Angie's List](#) or [Google](#) – we invite your investigation and you can call any of us, any time 775-852-2251 – use extension “0” to ring the HQ, or to leave a message for all of us at once.

Aaron Hoberg
Senior Professional
aaron@robisoneng.com x 713

Alison Agneray
Scientist
alison@robisoneng.com x 0

Andrea Roegiers
Staff Professional
andrea@robisoneng.com x 726

Carmen Larson
Office Administrator
carmen@robisoneng.com x 701

Cassidy Reese, EI
Project Professional
cassidy@robisoneng.com x 720

Chris Baxter
Survey Crew Chief
chris@robisoneng.com x 705

Christopher Ross, Ph.D.
Senior Scientist
cross@robisoneng.com x 707

Cody Ernst-Brock
Scientist
cody@robisoneng.com x 737

David Bakke
Residential Designer
david@robisoneng.com x 728

Eric Sage, PLS
Senior Surveyor
sage@robisoneng.com x 701

Giselle Ochoa, EI
Technician
giselle@robisoneng.com x 733

Julianne Zotter, PE, CEM
Treas., Sr. Enviro. Professional
julianne@robisoneng.com x 710

Justin Haghighi
IT Professional
justin@robisoneng.com x 712

Kandylaria Havens
PWS Operator Level II
kandy@robisoneng.com x 734

Luke Doyle, EI
Staff Professional
luke@robisoneng.com x 736

Makenzie Jones, EI
Project Professional
makenzie@robisoneng.com x722

Marcie Wood, CEM
Sr. Enviro. Professional
marcie@robisoneng.com x 724

Nathan Robison, PE, WRS
President, Principal Engineer
nathan@robisoneng.com x 700

Ralston Pedersen, EI
Project Professional / Mining
ralston@robisoneng.com x 717

Rebecca Bernier, PE
Project Engineer
rebecca@robisoneng.com x 727

Richard Phelps, LSI
Survey Crew Chief
rich@robisoneng.com x 719

Ryan Sigler
UAS Professional
ryan@robisoneng.com x 706

Ryan Switzer, PE
Project Engineer
rswitzer@robisoneng.com x 725

Steve Porter
Systems Integrator
steve@robisoneng.com x 718

Tara McManus, EI
Staff Professional
tara@robisoneng.com x 721

Terry Munson
Project Professional
terry@robisoneng.com x 708

TJ Prendergast, PE
VP, Senior Professional
tj@robisoneng.com x 716

Tony Kelsoe
Survey Crew Chief
tony@robisoneng.com x 714

Victoria Jackson, EI
Staff Professional
victoria@robisoneng.com x 723

SELECTED CLIENT & PROJECT REFERENCES

University of Nevada, Reno – Reno, NV – Dean Hitchcock – (775) 682-7223 - dhitchcock@unr.edu

DF Altmann – Fernley & Sparks, NV – Trudi Linsey – (775) 852-7887 x 501 - trudi@dfaltmann.com

Coeur-Rochester, Inc. – Rochester Mine - Casey Kiel – (775) 273-7995 x 1823 - ckiel@coeur.com

Nevada Cement – Ben Bufmack – (775) 575-2281 - bbufmack@nevadacement.com

Tahoe Pyramid Bike Trail – Janet Phillips, PE – (775) 825-9868 - tahoepyramidbike@aol.com

Sky Tavern Ski Resort – Tonopah Historic Mining Park – Ann Carpenter – (775) 240-2477 - ann.carpenter57@gmail.com

Simerson Construction – Dru Simerson – (775) 883-3133 – dru@simersonusa.com